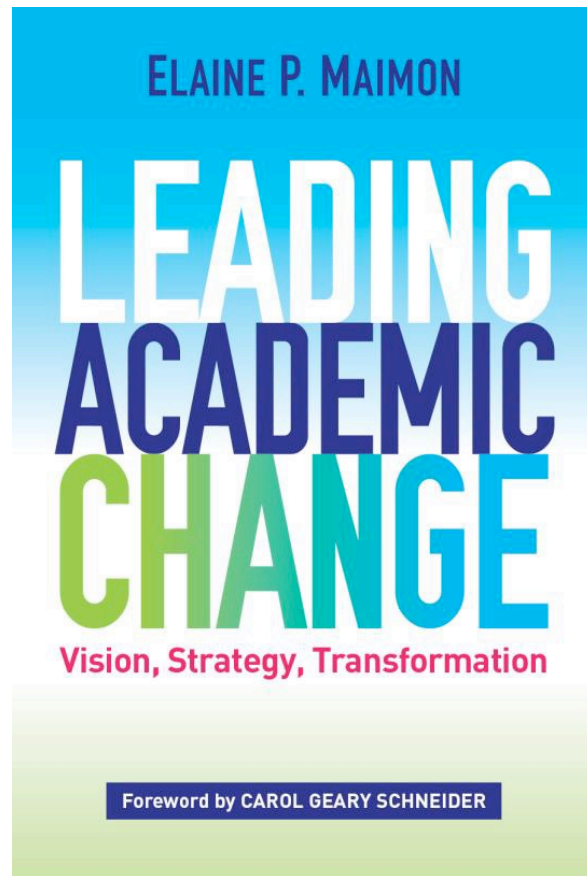


Leading Academic Change: Vision, Strategy, Transformation



**A Vision Without a Strategy
is a Fantasy**

**Dr. Elaine P. Maimon
President
July 18, 2018**

GSU is a Regional Public Institution

- One of nine state universities in Illinois
- Elaine Maimon has been President of GSU for 11 years – a time of great change. In 2015, GSU won the American Council on Education (ACE)/ Fidelity Investment Award for Institutional Transformation.
- GSU is the fastest growing public institution in the Chicago area, with the lowest tuition and fees





Where are we?

- Located 40 miles south of Chicago
- Easily accessible by car or Metra commuter train
- Located in a tranquil suburban setting but only a local train ride away from a world-class city

Living in the Midst of Art

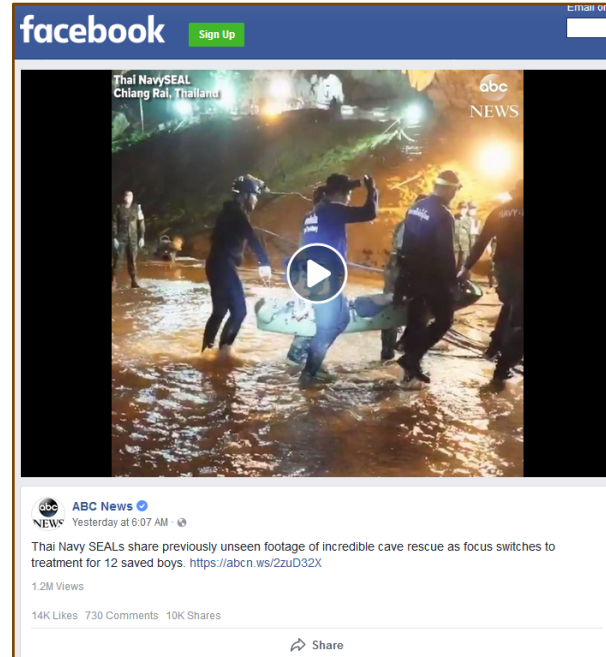


GSU is Turning 50



1969

Georges
Pompidou



2019



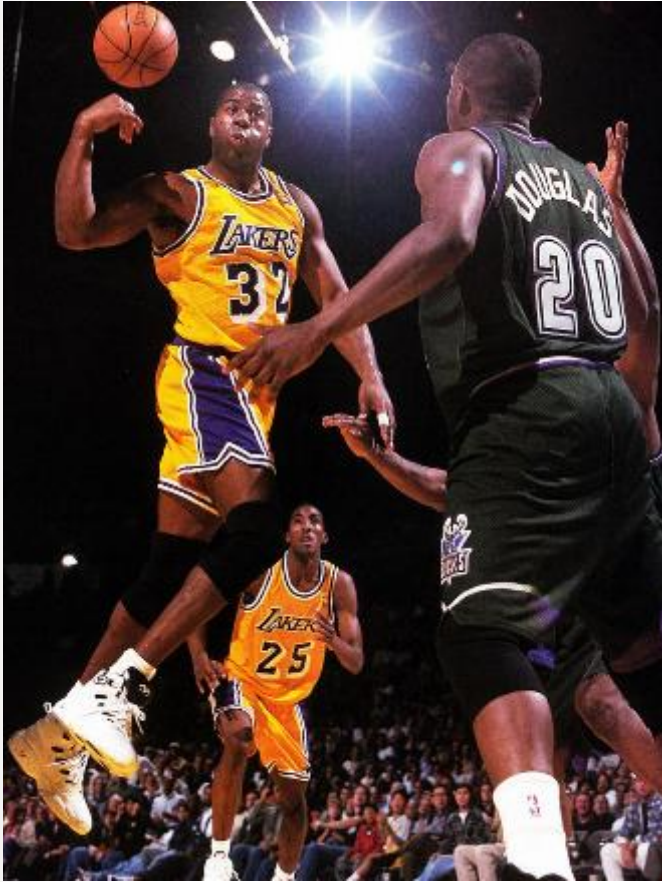
Emmanuel
Macron

New Horizons in Education



- **Emphasis on evaluating, connecting, and applying information**
- **High Impact Practices (HIPs)**
- **Strength Model of instruction**

Vision



- Clear Sight
- Focus, clarity in identifying and achieving goals
- Peripheral, awareness of what's happening on the edges of perception

Speed vs. Haste



Strategic Planning

Strategy 2015



Strategy 2025

Strategic Planning



Strategic planning requires sight and insight – seeing the many pathways through complex choices and discovering the best route to success.

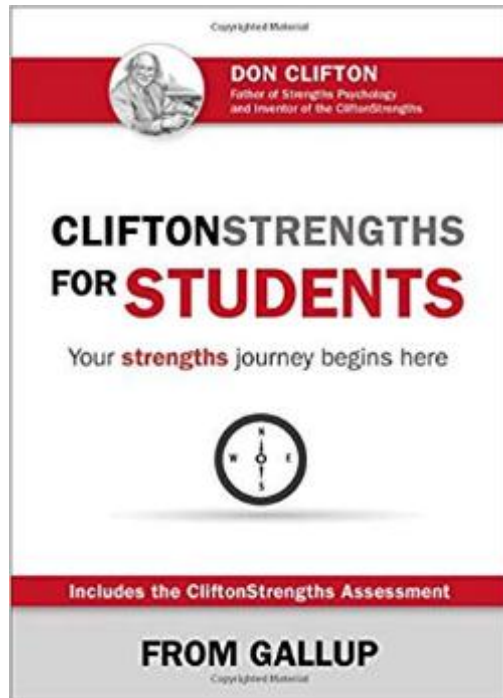
Effective Strategy

1. Listen – asking for advice is better than making suggestions
2. Intellectual Mobility – move across disciplines, model breaking down silos



Effective Strategy

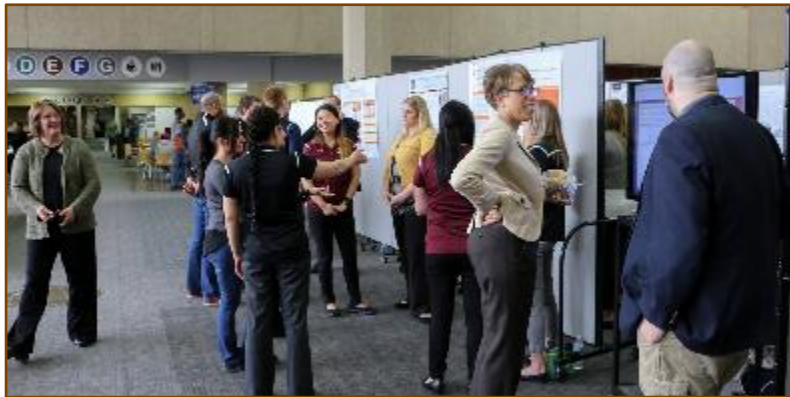
3. Build on Strengths – of students and colleagues and move away from deficit model



Dr. Shaun Harper

Effective Strategy

4. Encourage Research – curriculum change depends on scholarly exchange among faculty
5. Involve as many campus constituencies as possible




Research Day
GOVERNORS STATE UNIVERSITY

Innovations in Strategic Thinking

Examples of papers scheduled for this conference:

- Educating for democracy and citizenship in South Africa
- Flipped classroom
- Student engagement
- Innovation and memory
- Immersive learning
- Museum-based education



High Impact Practices

- First-year seminars and experiences
- Learning communities
- Writing and inquiry-intensive courses
- Collaborative assignments and projects
- Undergraduate research



GSU students present their research

High Impact Practices

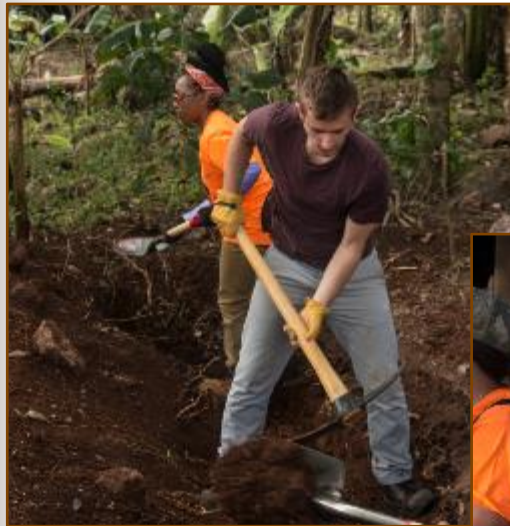
- Diversity / study away / global learning
- Service-learning, community based learning



**Dual Degree Program students
participate in service activities**

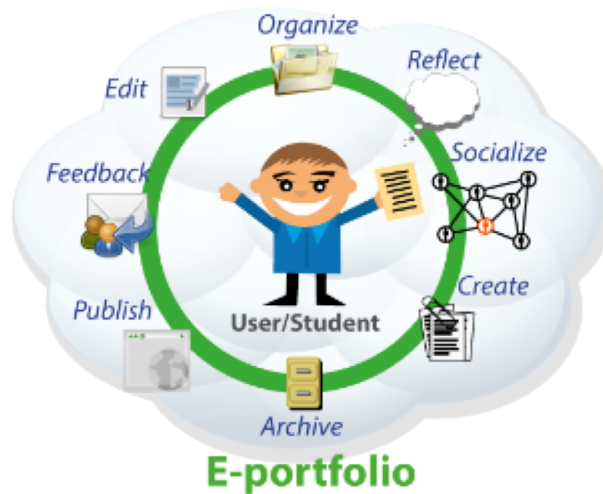
High Impact Practices

- Internships and field experiences
- Capstone courses and projects



**GSU students volunteer in
Nicaragua and Texas**

Competency-Based Education / Outcomes Assessment



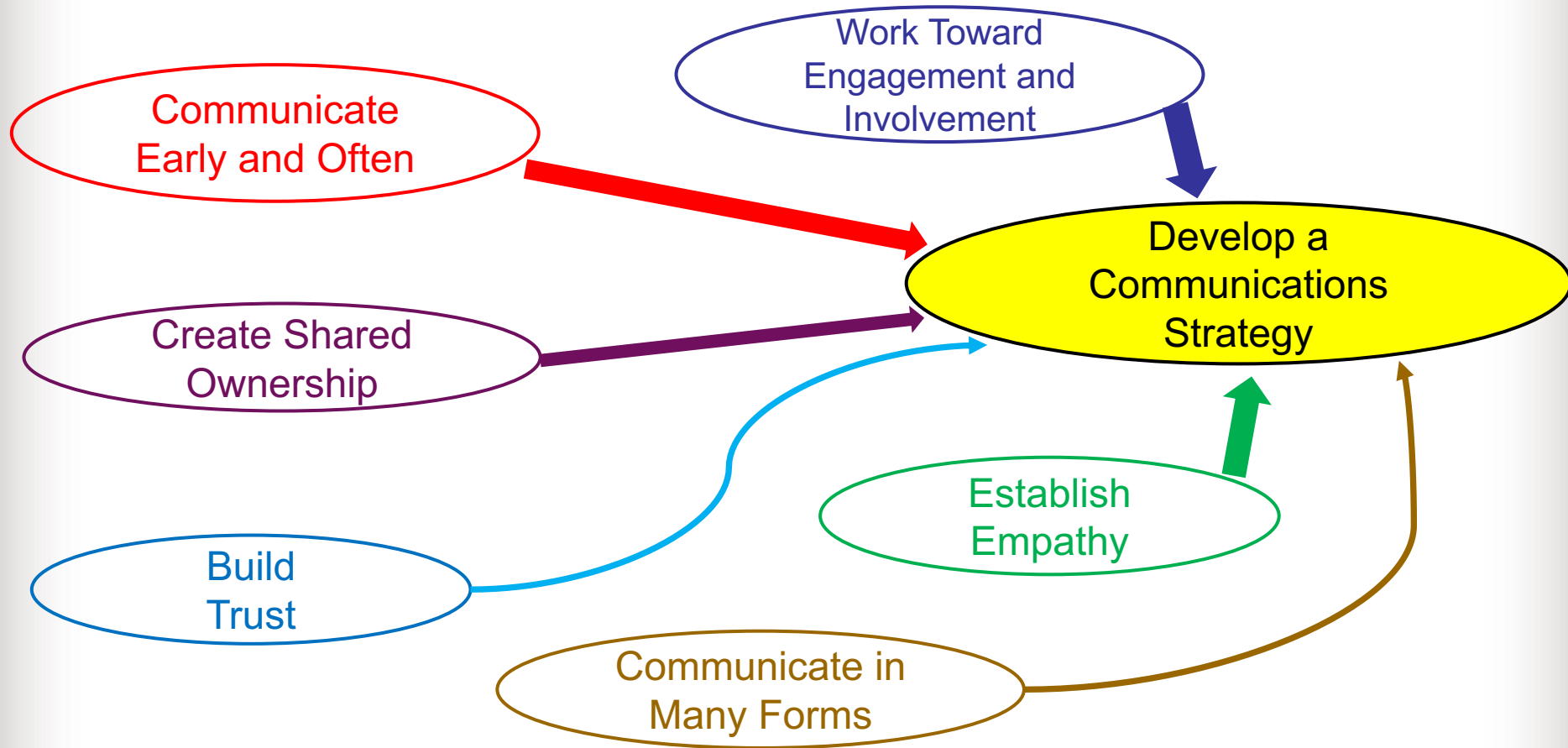
- E-Portfolios
- Degree Qualifications Profile (DQP)
(Association of American Colleges and Universities)



Leading Academic Change Depends on Communication

**Basic Assumption – No one reads anything.
No one listens to anything.**

Leading Academic Change Depends on Communication



Discussion Session

I am leading a discussion session tomorrow,
Thursday, July 19
13:15-14:15
Hall 1



Workshops



Dr. Mort Maimon
“Conversation with Dr. Mort Maimon about Effective Teaching Strategies”
Thursday, July 19
9:00 Hall 1



Dr. Gillian Maimon
“Honoring Diversity in an Elementary School Classroom”
Friday, July 20, 14:00, Hall 1



Thank you

Questions and Reflections



www.govst.edu
emaimon@govst.edu